

Deskriptiv statistik

Grupperede observationer (Højden af eleverne i 6B)

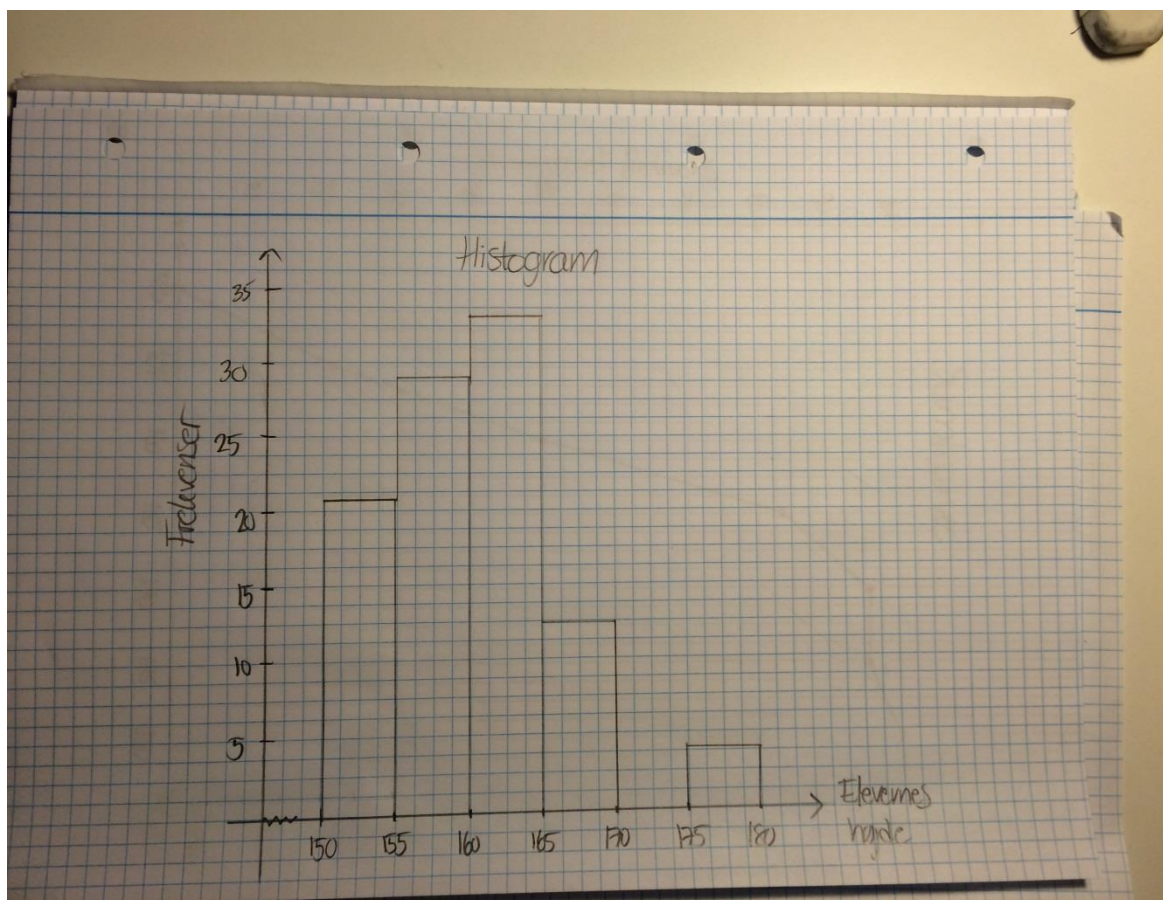
Højde målt i cm	Antal elever
[150,155]	5
]155,160]	7
]160,165]	8
]165,170]	3
]170,175]	0
]175,180]	1
	I alt 24

Middelværdi: $\mu = \frac{5 \cdot 152,5 + 7 \cdot 157,5 + 8 \cdot 162,5 + 3 \cdot 167,5 + 0 \cdot 172,5 + 1 \cdot 177,5}{24} = 160,2$

Frekvens

Højde målt i cm	Antal elever	Frekvens
[150,155]	5	$\frac{5}{24} \cdot 100\% = 20,8\%$
]155,160]	7	$\frac{7}{24} \cdot 100\% = 29,2\%$
]160,165]	8	$\frac{8}{24} \cdot 100\% = 33,3\%$
]165,170]	3	$\frac{3}{24} \cdot 100\% = 12,5\%$
]170,175]	0	$\frac{0}{24} \cdot 100\% = 0\%$
]175,180]	1	$\frac{1}{24} \cdot 100\% = 4,2\%$
	I alt 24	100%

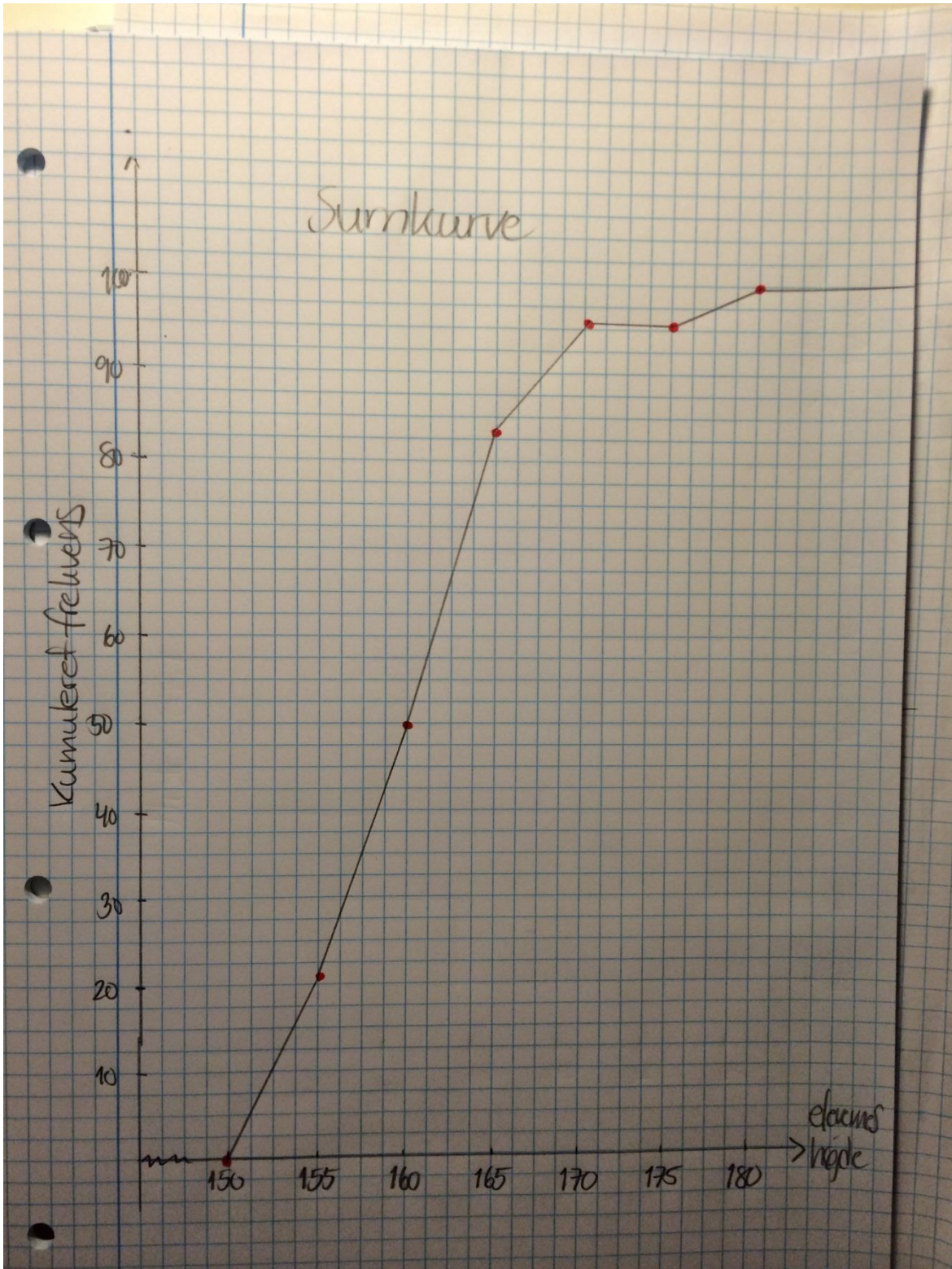
Histogram:



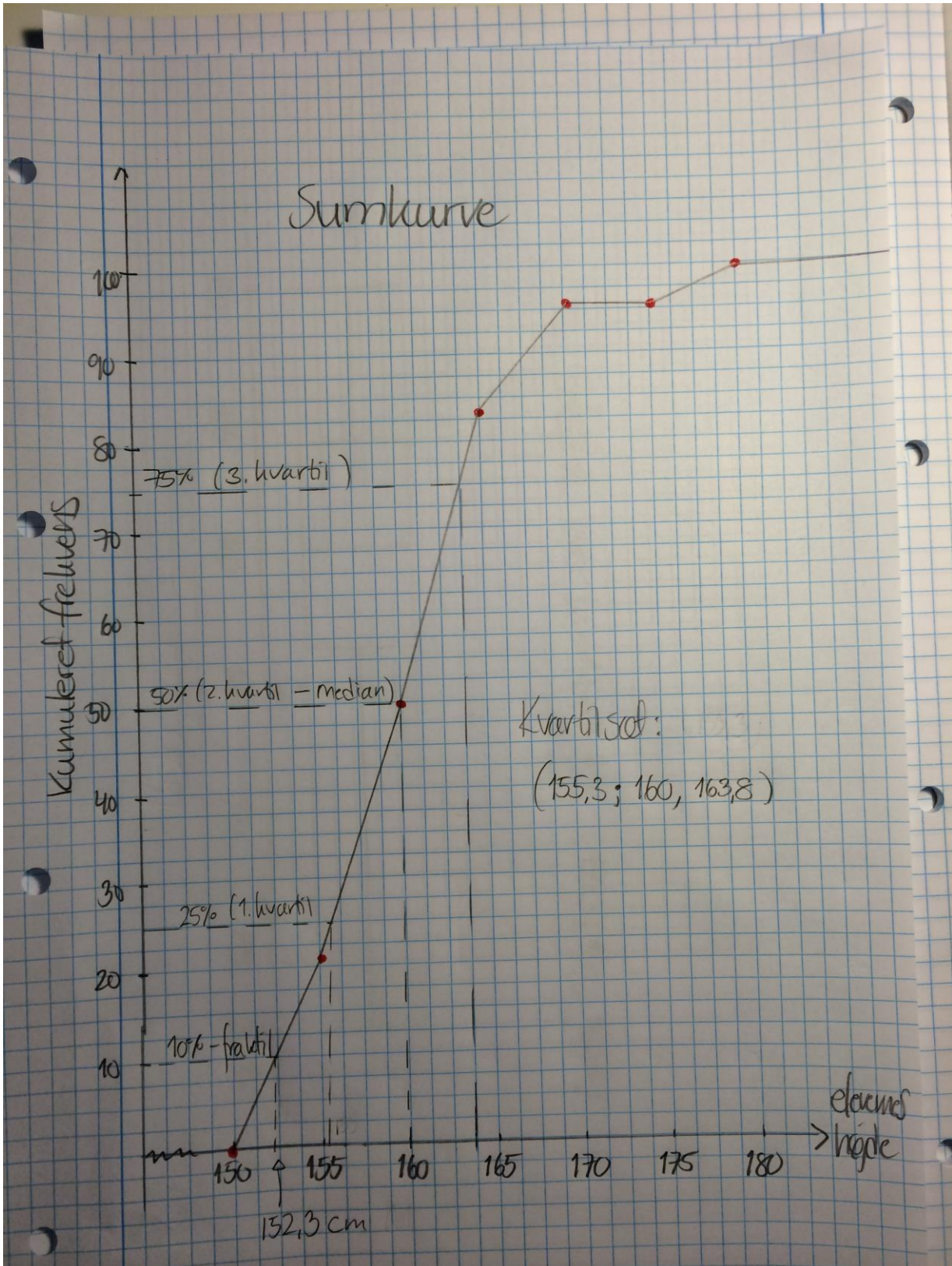
Kumuleret frekvens

Højde målt i cm	Antal elever	Frekvens	Kumuleret frekvens
[150,155]	5	$\frac{5}{24} \cdot 100\% = \underline{20,8\%}$	20,8%
]155,160]	7	$\frac{7}{24} \cdot 100\% = \underline{29,2\%}$	20,8% + 29,2% = 50%
]160,165]	8	$\frac{8}{24} \cdot 100\% = \underline{33,3\%}$	50% + 33,3% = 83,3%
]165,170]	3	$\frac{3}{24} \cdot 100\% = \underline{12,5\%}$	83,3% + 12,5% = 95,8%
]170,175]	0	$\frac{0}{24} \cdot 100\% = \underline{0\%}$	95,8% + 0% = 95,8%
]175,180]	1	$\frac{1}{24} \cdot 100\% = \underline{4,2\%}$	95,8% + 4,2% = 100%
	I alt 24	100%	

Sumkurver:



Fraktiler, kvartiler (q_1 , m , q_3):



Boksplot:

Boksplot over kvantiltæller: $(155,3; 160; 163,8)$

